

PROJECT NO.	SHEET NO.	TOTAL NO.
10SP.20045.6	1	5

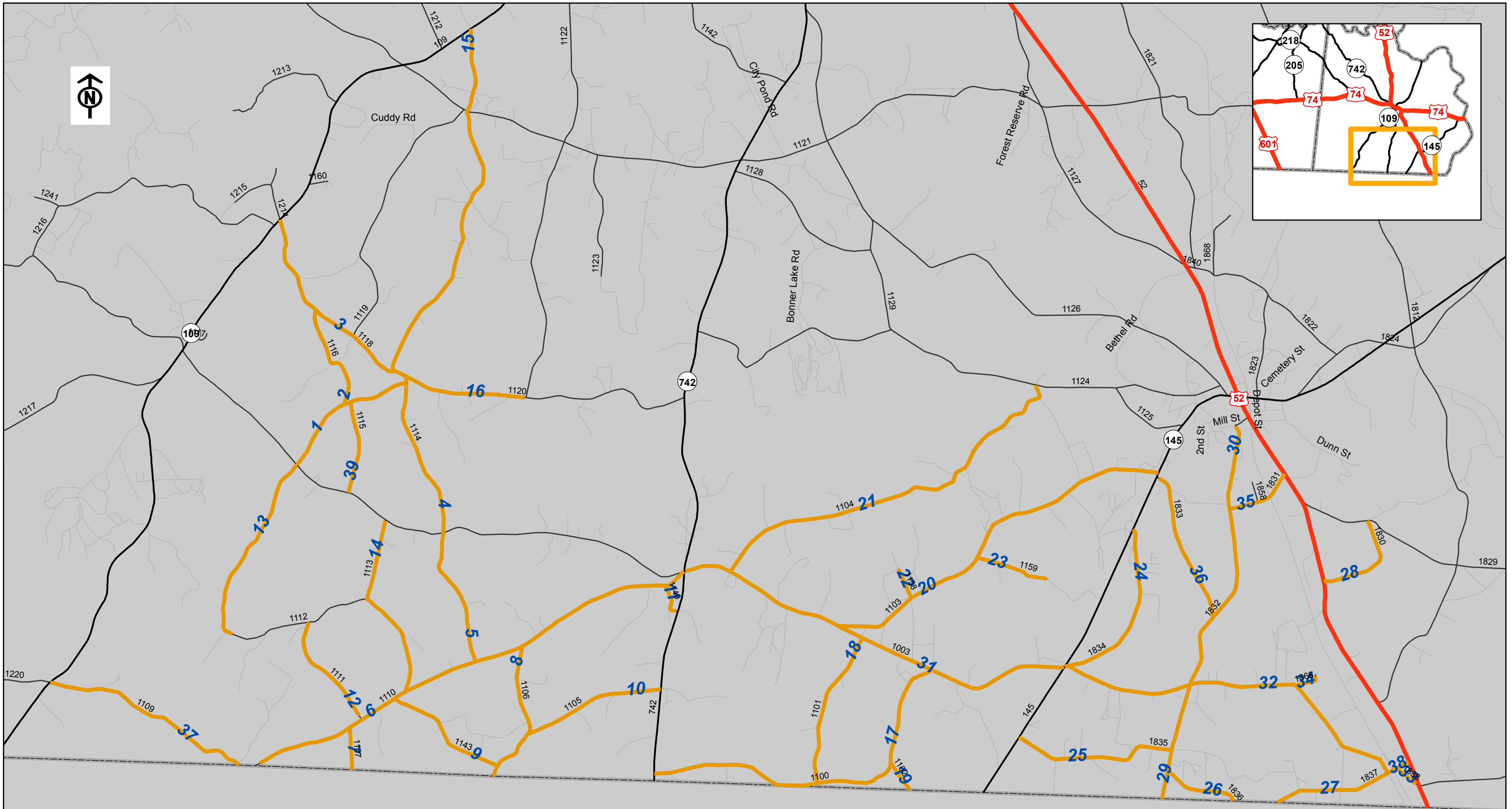
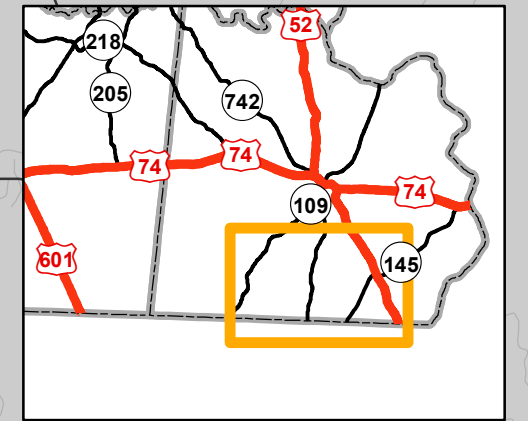
SUMMARY OF QUANTITIES

PROJECT NO	COUNTY	MAP NO	ROUTE	DESCRIPTION	LANES	LENGTH MI	WIDTH FT	ASPHALT SURFACE TREATMENT, DOUBLE SEAL SY	EMULSION FOR ASPHALT SURFACE TREATMENT GAL	BLOTTING SAND TON	WORK ZONE ADVANCE/GENERAL WARNING SIGNING SF	TEMPORARY TRAFFIC CONTROL LS
10SP.20045.6	Anson	1	SR 1112 (BECK RD)	FROM SR 1114 (WEBB RD) TO SR 1003 (DEEP CREEK RD)	2	1.38	16	12,954	6,477		142	
TOTAL FOR MAP NO. 1						1.38		12,954	6,477		142	
10SP.20045.6	Anson	2	SR 1116 (MCLAURIN RD)	FROM SR 1112 (BECK RD) TO SR 1118 (CHEWING RD)	2	1.1	20	12,907	6,453		110	
TOTAL FOR MAP NO. 2						1.1		12,907	6,453		110	
10SP.20045.6	Anson	3	SR 1118 (CHEWING RD)	FROM NC 109 TO SR 1120 (DICKIE LITTLE RD)	2	2.1	20	24,640	12,320		212	
TOTAL FOR MAP NO. 3						2.1		24,640	12,320		212	
10SP.20045.6	Anson	4	SR 1114 (WEBB RD)	FROM SR 1003 (DEEP CREEK RD) TO SR 1120 (GULLEDGE RD)	2	1.58	18	16,685	8,342		110	
TOTAL FOR MAP NO. 4						1.58		16,685	8,342		110	
10SP.20045.6	Anson	5	SR 1114 (GOAT PASTURE RD)	FROM SR 1003 (DEEP CREEK RD) TO SR 1110 (MAYESVILLE RD)	2	1.3	20	15,253	7,627		110	
TOTAL FOR MAP NO. 5						1.3		15,253	7,627		110	
10SP.20045.6	Anson	6	SR 1110 (MAYESVILLE RD)	FROM SR 1003 (DEEP CREEK RD) TO THE SC STATE LINE	2	4.5	17	44,880	22,440		404	
TOTAL FOR MAP NO. 6						4.5		44,880	22,440		404	
10SP.20045.6	Anson	7	SR 1107 (MCLEOD RD)	FROM SR 1110 (MAYESVILLE RD) TO THE SC STATE LINE	2	0.4	16	3,755	1,877		110	
TOTAL FOR MAP NO. 7						0.4		3,755	1,877		110	
10SP.20045.6	Anson	8	SR 1106 (DOC EDDINS RD)	FROM SR 1110 (MAYESVILLE RD) TO SR 1105 (OLD RUBY RD)	2	0.86	18	9,082	4,541		110	
TOTAL FOR MAP NO. 8						0.86		9,082	4,541		110	
10SP.20045.6	Anson	9	SR 1143 (LONG RD)	FROM SR 1110 (MAYESVILLE RD) TO SR 1105 (OLD RUBY RD)	2	1.3	18	13,728	6,864		110	
TOTAL FOR MAP NO. 9						1.3		13,728	6,864		110	
10SP.20045.6	Anson	10	SR 1105 (OLD RUBY RD)	FROM NC 742 TO THE SC STATE LINE	2	1.9	18	20,064	10,032		206	
TOTAL FOR MAP NO. 10						1.9		20,064	10,032		206	
10SP.20045.6	Anson	11	SR 1149 (EDDINS RD)	FROM SR 1110 (MAYESVILLE RD) TO NC 742	2	0.3	18	3,168	1,584		55	
TOTAL FOR MAP NO. 11						0.3		3,168	1,584		55	
10SP.20045.6	Anson	12	SR 1111 (GRIGGS RD)	FROM SR 1110 (MAYESVILLE RD) TO SR 1112 (BECK RD)	2	1.1	20	12,907	6,453		110	
TOTAL FOR MAP NO. 12						1.1		12,907	6,453		110	
10SP.20045.6	Anson	13	SR 1112 (BECK RD)	FROM SR 1003 (DEEP CREEK RD) TO PAVEMENT JOINT PAST THE BRIDGE	2	1.87	20	21,941	10,971		174	
TOTAL FOR MAP NO. 13						1.87		21,941	10,971		174	
10SP.20045.6	Anson	14	SR 1113 (CEDAR CREEK RD)	FROM SR 1110 (MAYESVILLE RD) TO SR 1003 (DEEP CREEK RD)	2	1.8	18	19,008	9,504		174	
TOTAL FOR MAP NO. 14						1.8		19,008	9,504		174	
10SP.20045.6	Anson	15	SR 1120 (DICKIE LITTLE)	FROM NC 109 TO SR 1121 (BETHEL RD)	2	0.81	18	8,554	4,277		110	
TOTAL FOR MAP NO. 15						0.81		8,554	4,277		110	
10SP.20045.6	Anson	16	SR 1120 (GULLEDGE RD/DICKIE LITTLE RD)	FROM SR 1121 (BETHEL RD) TO SR 1122 (GREEN HILL SCHOOL RD)	2	4.04	16	37,922	18,961		308	
TOTAL FOR MAP NO. 16						4.04		37,922	18,961		308	
10SP.20045.6	Anson	17	SR 1100 (ADAMS RD)	FROM NC 742 TO SR 1003 (CASON OLDFIELD RD)	2	3.44	16	32,290	16,145		276	
TOTAL FOR MAP NO. 17						3.44		32,290	16,145		276	
10SP.20045.6	Anson	18	SR 1101 (HIGHTOWER RD)	FROM SR 1003 (CASON OLDFIELD RD) TO SR 1100 (ADAMS RD)	2	1.5	20	17,600	8,800		110	
TOTAL FOR MAP NO. 18						1.5		17,600	8,800		110	
10SP.20045.6	Anson	19	SR 1102 (MCCOY RD)	FROM THE SC STATE LINE TO SR 1100 (ADAMS RD)	2	0.33	18	3,485	1,742		55	
TOTAL FOR MAP NO. 19						0.33		3,485	1,742		55	
10SP.20045.6	Anson	20	SR 1103 (SANDY RIDGE CH RD)	FROM NC 145 TO SR 1003 (CASON OLDFIELD RD)	2	3.61	18	38,122	19,061		276	
TOTAL FOR MAP NO. 20						3.61		38,122	19,061		276	
10SP.20045.6	Anson	21	SR 1104 (CRAWFORD POND RD)	FROM SR 1003 (CASON OLDFIELD RD) TO SR 1124 (ROBINSON BRIDGE RD)	2	3.72	17	37,101	18,550		244	
TOTAL FOR MAP NO. 21						3.72		37,101	18,550		244	

PROJECT NO.	SHEET NO.	TOTAL NO.
10SP.20045.6	2	5

SUMMARY OF QUANTITIES

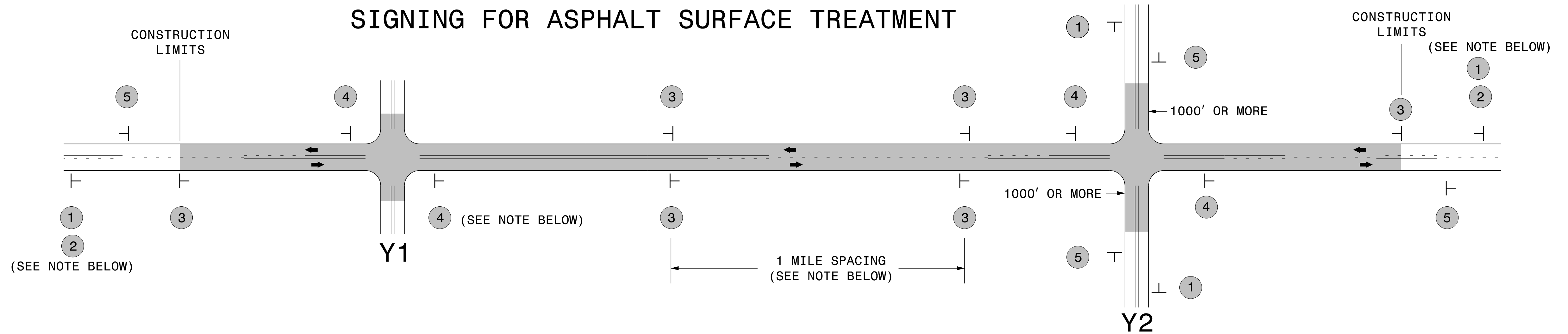
PROJECT NO	COUNTY	MAP NO	ROUTE	DESCRIPTION	LANES	LENGTH MI	WIDTH FT	ASPHALT SURFACE TREATMENT, DOUBLE SEAL SY	EMULSION FOR ASPHALT SURFACE TREATMENT GAL	BLOTTING SAND TON	WORK ZONE ADVANCE/GENERAL WARNING SIGNING SF	TEMPORARY TRAFFIC CONTROL LS
10SP.20045.6	Anson	22	SR 1158 (RORIE MCCOY RD)	FROM SR 1103 (SANDY RIDGE CH RD) TO THE DEAD END	2	0.3	20	3,520	1,760		55	
TOTAL FOR MAP NO. 22						0.3		3,520	1,760		55	
10SP.20045.6	Anson	23	SR 1159 (GATEWOOD RORIE RD)	FROM SR 1103 (SANDY RIDGE CH RD) TO THE END OF MAINTENNACE	2	0.7	20	8,213	4,107		55	
TOTAL FOR MAP NO. 23						0.7		8,213	4,107		55	
10SP.20045.6	Anson	24	SR 1834 (PREVITTE RD)	FROM NC 145 TO SR 1003 (MCLENDON RD)	2	1.75	20	20,533	10,267		110	
TOTAL FOR MAP NO. 24						1.75		20,533	10,267		110	
10SP.20045.6	Anson	25	SR 1835 (JOHNSON-MELTON RD)	FROM SR 1832 (PERU RD) TO NC 145	2	1.58	18	16,685	8,342		110	
TOTAL FOR MAP NO. 25						1.58		16,685	8,342		110	
10SP.20045.6	Anson	26	SR 1836 (RHYNE RD)	FROM SR 1832 (PERU RD) TO THE SC STATE LINE	2	0.73	18	7,709	3,854		110	
TOTAL FOR MAP NO. 26						0.73		7,709	3,854		110	
10SP.20045.6	Anson	27	SR 1837 (ZOAR RD)	FROM THE SC STATE LINE TO SR 1003 (MCLENDON RD)	2	1.12	18	11,827	5,914		110	
TOTAL FOR MAP NO. 27						1.12		11,827	5,914		110	
10SP.20045.6	Anson	28	SR 1830 (NIVENS RD)	FROM US 52 TO SR 1829 (SNEEDSBORO RD)	2	0.99	18	10,454	5,227		110	
TOTAL FOR MAP NO. 28						0.99		10,454	5,227		110	
10SP.20045.6	Anson	29	SR 1832 (PERU RD)	FROM THE SC STATE LINE TO THE PAVEMENT CHANGE	2	3.42	18	36,115	18,058		250	
TOTAL FOR MAP NO. 29						3.42		36,115	18,058		250	
10SP.20045.6	Anson	30	SR 1832 (PERU RD)	FROM THE PAVEMENT CHANGE TO SR 1832 (MILL ST)	2	0.32	22	4,130	2,065		58	
TOTAL FOR MAP NO. 30						0.32		4,130	2,065		58	
10SP.20045.6	Anson	31	SR 1003 (CASON OLDFIELD)	FROM NC 742 TO NC 145	2	3.94	18	41,606	20,803		308	
TOTAL FOR MAP NO. 31						3.94		41,606	20,803		308	
10SP.20045.6	Anson	32	SR 1003 (MCLENDON RD)	FROM SR 1837 (ZOAR RD) TO NC 145	2	3.49	19	38,902	19,451		276	
TOTAL FOR MAP NO. 32						3.49		38,902	19,451		276	
10SP.20045.6	Anson	33	SR 1838 (MAIN ST)	FROM US 52 TO SR 1003 (EAST BROAD ST)	2	0.24	36	5,069	2,534		55	
TOTAL FOR MAP NO. 33						0.24		5,069	2,534		55	
10SP.20045.6	Anson	34	SR 1866 (GALILEE RD)	FROM SR 1003 (MCLENDON RD) TO THE END OF MAINTENANCE	2	0.23	20	2,699	1,349		55	
TOTAL FOR MAP NO. 34						0.23		2,699	1,349		55	
10SP.20045.6	Anson	35	SR 1831 (RATLIFF GIN RD)	FROM US 52 TO SR 1832 (PERU RD)	2	0.64	18	6,758	3,379		110	
TOTAL FOR MAP NO. 35						0.64		6,758	3,379		110	
10SP.20045.6	Anson	36	SR 1833 (CASON-MCLAURIN RD)	FROM NC 145 TO SR 1832 (PERU RD)	2	1.45	18	15,312	7,656		55	
TOTAL FOR MAP NO. 36						1.45		15,312	7,656		55	
10SP.20045.6	Anson	37	SR 1109 (GEORGE RATLIFF RD)	FROM NC 109 TO SR 1110 (MAYESVILLE RD)	2	2.1	18	22,176	11,088		110	
TOTAL FOR MAP NO. 37						2.1		22,176	11,088		110	
10SP.20045.6	Anson	38	SR 1003 (1003 RD)	FROM US 52 TO SR 1837 (ZOAR RD)	2	0.21	17	2,094	1,047		55	
TOTAL FOR MAP NO. 38						0.21		2,094	1,047		55	
10SP.20045.6	Anson	39	SR 1115 (RED HILL RD)	FROM SR 1112 (BECK RD) TO SR 1003 (DEEP CREEK RD)	2	0.88	20	10,325	5,163		55	
TOTAL FOR MAP NO. 39						0.88		10,325	5,163		55	
TOTAL FOR PROJ NO. 10SP.20045.6						63.03		670,173	335,085	15.00	5,563	1
GRAND TOTAL						63.03		670,173	335,085	15.00	5,563	1



Anson County
AST



SIGNING FOR ASPHALT SURFACE TREATMENT



LEGEND	
┆	STATIONARY SIGN
←	DIRECTION OF TRAFFIC FLOW

MAINLINE (-L-) SIGNING

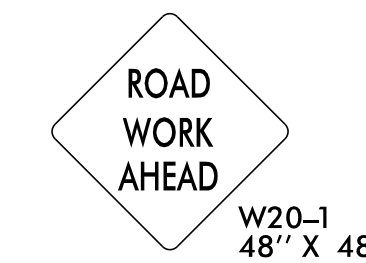
-Y- LINE SIGNING

SIGNING NOTES AND PLACEMENT PER DIRECTION		
1	 <small>W20-1 48" X 48"</small>	<p>PLACE 1000' PRIOR TO BEGINNING OF CONSTRUCTION LIMITS. ONLY USED ON -Y- LINES IF RESURFACING LIMITS EXTEND 1000' ALONG -Y- LINE.</p> <p>#2 SIGN ONLY USED WHEN RESURFACING LIMITS ARE 2 OR MORE MILES IN LENGTH. ROUND UP TO NEXT WHOLE NUMBER. (NO FRACTIONAL OR DECIMAL NUMBERS)</p>
2	 <small>W7-3aP 24" X 18"</small>	
3	 <small>W8-7 48" X 48"</small> <small>SP 48" X 48"</small>	<p>ALTERNATE THE FOLLOWING TWO SIGNS: STARTING WITH "LOOSE GRAVEL" (W8-7) FOLLOWED BY "UNMARKED PAVEMENT".</p> <p>PLACE INITIALLY AT THE CONSTRUCTION LIMITS AND SPACED 1 MILE APART THEREAFTER. IF NO -Y- LINES EXIST, PLACE 2ND SET 1/2 MILE FROM THE CONSTRUCTION LIMITS AND THEN SPACE 1 MILE THEREAFTER.</p>
4	 <small>SP 13106 48" X 48"</small>	<p>THESE ARE FOR -Y- LINES THAT ARE "THROUGH" ROADWAYS. DEAD END AND SUBDIVISION ROADS ARE NOT "THROUGH" ROADWAYS. INSTALL 500' +/- FROM EACH -Y- LINE APPROACH AS SHOWN ABOVE. FOR MULTIPLE -Y- LINES THAT ARE SEPARATED BY 0.25 MILES OR LESS, TREAT AS A SINGLE UNIT AND INSTALL WITHIN 500' OF EACH APPROACH. A MAXIMUM OF 2 SIGN SETS PER MILE. DO NOT INSTALL WHEN -Y- LINES ARE WITHIN 0.5 MILES FROM "END ROAD WORK" SIGN.</p>
5	 <small>G20-2 A 48" X 24"</small>	<p>PLACE 500' FOLLOWING THE END OF CONSTRUCTION LIMITS.</p>

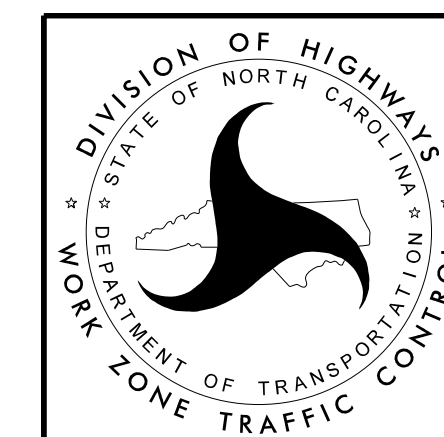
NO REQUIRED STATIONARY SIGNING FOR THE FOLLOWING -Y- LINE CONDITIONS:

- 1) LESS THAN 1000' OF RESURFACING ALONG -Y- LINE
- 2) SUBDIVISION ROADS
- 3) DEAD END ROADS

WHEN PAVING/CONSTRUCTION ACTIVITIES PROCEED ACROSS AN UNSIGNED -Y- LINE, ADVANCE WARNING PORTABLE SIGNS SHALL BE USED ALONG THE -Y- LINE AS SHOWN BELOW. REMOVE UPON COMPLETION OF WORK.

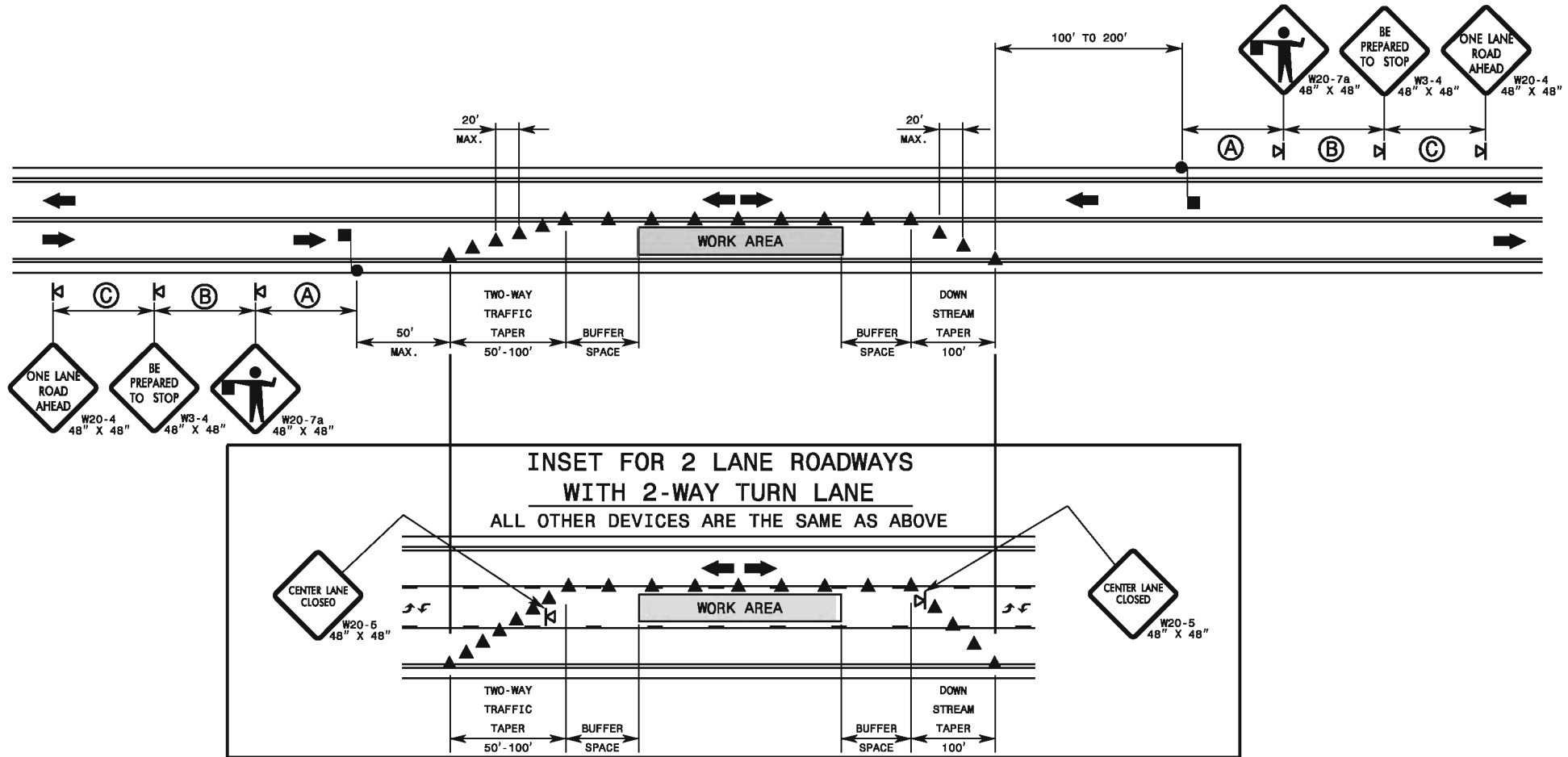


PLACED 500' IN ADVANCE OF FLAGGER. PLACED 250' IN ADVANCE OF FLAGGER.



**ADVANCE WARNING SIGNS
FOR
ASPHALT SURFACE TREATMENTS
2 LANE ROADWAYS**

1-12



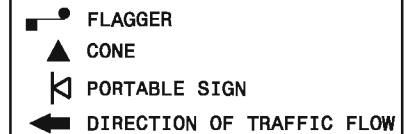
GENERAL NOTES FOR FLAGGER OPERATIONS

- 1- REFER TO STD. 1101.11 SHEET 4 FOR SIGN SPACING.
- 2- INSTALL LANE CLOSURES WITH THE TRAFFIC FLOW, BEGINNING WITH DEVICES ON THE UPSTREAM SIDE OF TRAFFIC.
- 3- REMOVE LANE CLOSURES AGAINST THE TRAFFIC FLOW, BEGINNING WITH DEVICES ON THE DOWNSTREAM SIDE OF TRAFFIC.
- 4- PLACE CONES THRU THE WORK AREA AT THE MAXIMUM SPACING EQUAL IN FEET TO 2 TIMES THE POSTED SPEED LIMIT.
- 5- EXTEND LANE CLOSURES AT THE BUFFER SPACE SUCH THAT STOPPING SIGHT DISTANCE IS PROVIDED TO THE FLAGGER (REFER TO STD. 1101.11 SHEET 2).
- 6- DO NOT STOP TRAFFIC IN ANY ONE DIRECTION FOR MORE THAN 5 MINUTES AT A TIME.
- 7- DRUMS OR SKINNY-DRUMS MAY BE USED IN LIEU OF CONES. REFER TO ROADWAY STANDARD DRAWING 1180.01 FOR SKINNY-DRUM REQUIREMENTS.
- 8- USE FLAGGERS TO CONTROL TRAFFIC AT INTERSECTIONS AFFECTED BY THE LANE CLOSURE. SUPPLEMENT FLAGGERS LOCATED AT INTERSECTIONS WITH FLAGGER AHEAD SIGNS (W20-7a) PLACED APPROXIMATELY 250 FT. IN ADVANCE OF THE FLAGGER. FOR SIGNALIZED INTERSECTIONS PLACE SIGNALS IN THE FLASH MODE AND RECOMMEND THE USE OF LAW ENFORCEMENT.
- 9- REFER TO 2009 MUTCD, CHAPTER 6, FOR FLAGGER CONTROL, REQUIREMENTS, AND PROCEDURES.
- 10- DO NOT EXCEED A 1 MILE LANE CLOSURE LENGTH UNLESS OTHERWISE SHOWN IN THE TMP OR AS DIRECTED BY THE ENGINEER.

GENERAL NOTES FOR PILOT CAR OPERATIONS

- 1- USE PILOT CARS WHEN DIRECTED BY THE ENGINEER.
- 2- IF ROADWAY WIDTH IS LESS THAN 22 FEET (EOP TO EOP), CONES MAY NOT BE REQUIRED ALONG WORK AREA, AND AT THE DISCRETION OF THE ENGINEER, CONES MAY BE OMITTED ALONG THE WORK AREA IF USING A PILOT CAR.
- 3- CONES ARE ALWAYS REQUIRED IN THE UPSTREAM AND DOWNSTREAM TAPERS.
- 4- MOUNT SIGN G20-4 "PILOT CAR FOLLOW ME" AT A CONSPICUOUS POSITION ON THE REAR OF THE PILOT VEHICLE.
- 5- DO NOT INSTALL MORE THAN ONE (1) MILE OF LANE CLOSURE, MEASURED FROM THE BEGINNING OF THE MERGE TAPER TO THE END OF THE LANE CLOSURE.
- 6- ADVISE RESIDENTS AND BUSINESSES WITHIN THE LANE CLOSURE LIMITS ABOUT METHODS OF SAFE EGRESS AND INGRESS FROM DRIVEWAYS DURING FLAGGING AND PILOT CAR OPERATIONS.

LEGEND



1-12